

Henriette

Henriette is a small triangle shawl in garter stitch, with a simple cable pattern and an i-cord edging, embellished with a little loop.

Materials:

- 150 g (600 m) fingering yarn, e.g. SpinningMartha Bluefaced Leicester and Silk
- circular needle 3 or 3,5 mm (or as desired)
- cable needle
- small button



The pattern is described in RS and WS rows.

Cast on 24 sts.

WS row:

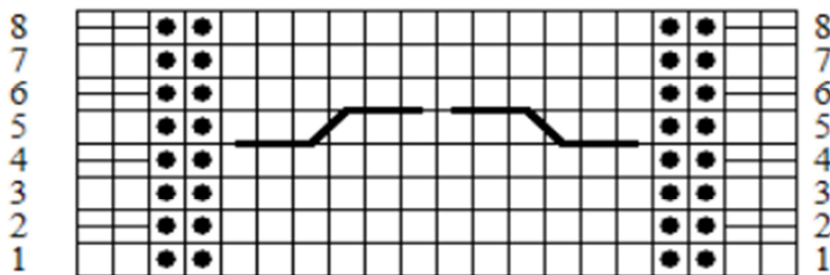
1 selvedge stitch (sst), k1, p2, k2, p12, k2, p2, k1, 1 sst

- R 1: sst, yo, k1, yo, [20 sts cable chart], yo, k1, yo, sst
 R 2: sst, knit yo through back loop (k yo tbl), k1, k yo tbl, [20 sts cable chart], k yo tbl, k1, k yo tbl, sst
 R 3: sst, yo, k3, yo, [20 sts cable chart], yo, k3, yo, sst
 R 4: sst, k yo tbl, k3, k yo tbl, [20 sts cable chart], k yo tbl, k3, k yo tbl, sst
 R 5: sst, yo, k5, yo, [20 sts cable chart], yo, k5, yo, sst
 R 6: sst, k yo tbl, k5, k yo tbl, [20 sts cable chart], k yo tbl, k5, k yo tbl, sst
 R 7: sst, yo, k7, yo, [20 sts cable chart], yo, k7, yo, sst
 R 8: sst, k yo tbl, k7, k yo tbl, [20 sts cable chart], k yo tbl, k7, k yo tbl, sst

Continue as described adding 4 new sts (yo) in every right side row. Always knit the yo through the back loop in the wrong side row.

Finish after a row no. 8 and be careful to keep 15 g (10 %) of yarn for the i-cord edging.

Cable chart:



Legend:

- - k in right side row, p in wrong side row
- - p in right side row, k in wrong side row
- - slip stitch with yarn in front
- ┌───┐ - slip 3 st to cable needle, keep it in front, k3, k sts on cable needle
- └───┘ - slip 3 st to cable needle, keep it in back, k3, k sts on cable needle

I-cord edging:

Begin in a right side row casting on additional 3 sts on the left needle.
 * k2, k2 tog tbl (third new stitch and first stitch of the edge); slip the 3 sts on the right needle back to the left one *
 Repeat between ** continuously. With every row one of the stitches of the edge is casted off.
 Work 3 i-cord rows into the last stitch of the edge to shape the curve.



Pick up the loops of the selvedge stitches (upper edge of the shawl) and continue with the i-cord edging as described. After working the last edging stitch cast off the remaining 3 sts and sew into the beginning of the i-cord edging. Sew in ends.

Wash the shawl in lukewarm water, stretch along the upper edge and hang up stretched for drying.



Use the remaining yarn to work an i-cord over 3 sts (* k3, slip sts back to left needle*), app. 25 cm long.

Cast off, sew in ends and knot each end. Form into a loop, fix it with some stitches and sew the button on. Fix it on the lower end of the cable.



Enjoy knitting
and wearing!

This pattern, its photos and products made from this pattern are intended for private use only and may not be distributed for commercial purposes without the written consent of the designer.

© SpinningMartha Christine Ebers 2012